

# Child care centers matter for our economy.

Parents need to go to work.

**186,876**  
 child care slots available in licensed, registered, and approved child care centers

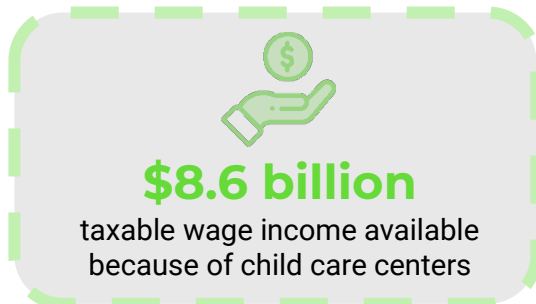
→

**186,876**  
 parents can now go to work

×

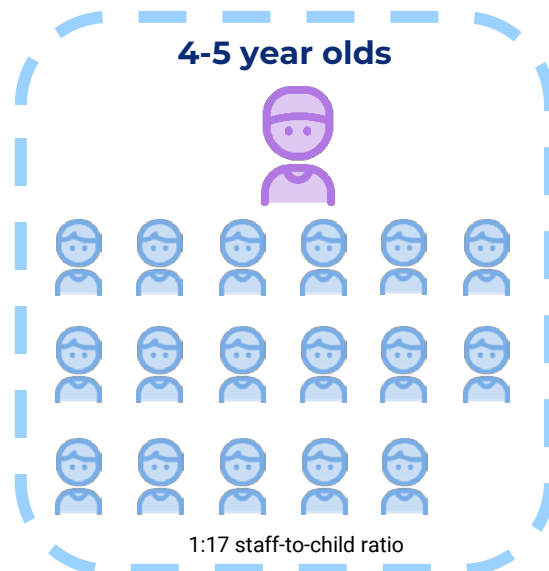
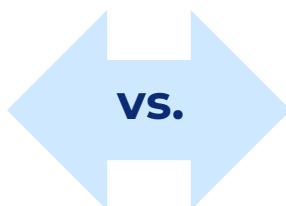
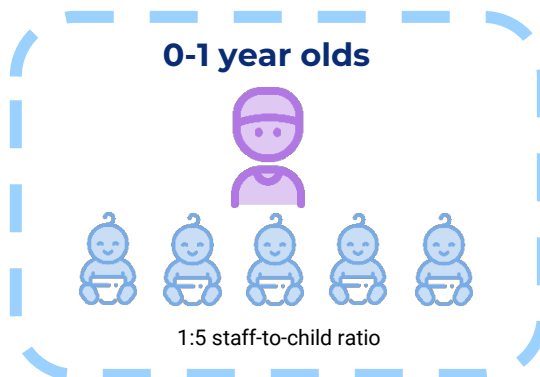
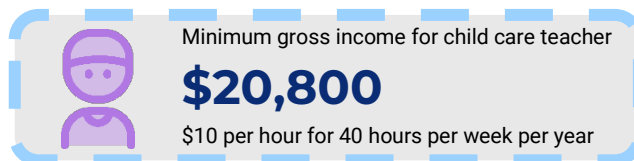
**\$45,933**  
 median income of a one-earner household

=



## The child care center business model depends on enrollment of older children.

Per DSS regulations, licensed, registered, and approved child care centers must adhere to specific staff-to-child ratios dependent on the age of the children in the classroom.



## The number of child care centers has been declining.

**3,123**  
 licensed, registered, and approved child care centers in October 2012

→

**2,583**  
 licensed, registered, and approved child care centers in September 2017

=

**-17.3%**  
 five year decline in number of child care centers