

NEEDS ASSESSMENT

2024 – 2026



Needs Assessment Process

CONVENE

Held two community convenings with 25 active participants and developed a vision for young children and their families. County wide survey results were also utilized.

October 2022 – January 2023



PRIORITIZE

Organized the insight gathered from the convenings and data to prioritize the concerns, needs, and gaps the partnership wants to address and formalized Needs Assessment

January 2023 – March 2023

UNDERSTAND

Reviewed local data and map assets to understand the state of young children, their families, and the early childhood system

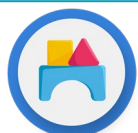
October 2022 – March 2023

“This is all great information to inform our work.”

-Participant

Asset Map





Childcare & Education



Special Needs & Early Intervention

School District of Pickens County

Help Me Grow

SC CCR&R

BabyNet

Parenting and Family Literacy

Tri County Technical College

Ahead Start

Palmetto Basics

Nurse Family Partnership

CDS

Bright by Text

County Childcare Centers

Family Connection of SC

Pickens County Library System

Priorities: Summary

1. Affordable and available childcare.

Infant care is very difficult to find.

2. More home visitation programs.

Expansion of/capacity increase of current programs.

3. Maternal/Infant Mental Health services.

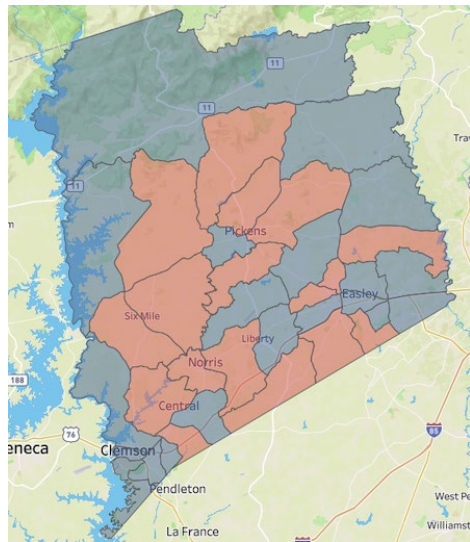
High suicide rate in county. Parent/caregiver survey revealed mental illness as the top adverse health experience.

4. Lack of Transportation in rural areas.

Public transportation is available in only one municipality in the county.

Priority One: Affordable and available infant care

Infant care is very difficult to find. Over 50% of our county's census tracts are considered childcare deserts.



Provider location and center capacity obtained from schildcare.org on October 16, 2022. Definition of a child care desert obtained from the Center for American Progress, "A child care desert is any census tract with more than 50 children under age 5 that contains either no child care providers or so few options that there are more than three times as many children as licensed child care slots" (<https://www.childcaredeserts.org/>). Population under age 5 by census tract obtained from the American Community Survey 2016-2020 Five Year Estimates (Table B01001). US Census Bureau. Calculations done by Chelsea Richard of South Carolina First Steps (October 16, 2022).

Priority Two: More home visitation programs with priority in rural areas.

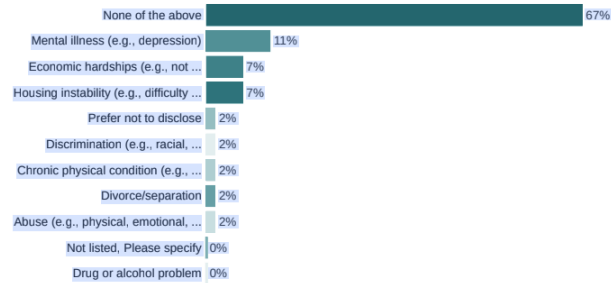
This priority came out of our community conversations. We need to create a new resource map to substantiate the claim that HV programs are not present in rural communities.

Priority Three: Maternal/ Infant Mental Health.

Q7. Have you experienced any of these in the past 5 years?

Please select all that apply

53 Responses



Mental illness is noted as the highest adverse health concern on the parent/caregiver survey.

Continued community education on the importance of early experiences and how adverse childhood experiences affect the brain and body. Potential to seek funding to implement programs that target maternal depression and secure attachment.

“Our suicide rate is too high in the county. It’s above the state average.”

Priority Four: Lack of Transportation.

Data point

Public transportation only exists in one municipality out of the 7 in the county.

“Transportation is a need that we have been looking at for over a decade. It is too big for one agency to solve. It takes political power.”

Next Steps

PLAN

Write the partnership's three-year Strategic Plan using the Needs Assessment

March 2023 – May 2023



APPLY

Utilize the Strategic Plan to inform the partnership's Annual Formula Funding Grant Application

May 2023, May 2024, May 2025



IMPLEMENT

Execute the programs and services outlined in the Strategic Plan

July 2023 – June 2026



MONITOR

Track the partnership's progress on implementing programs to fidelity and on achieving the Strategic Plan

July 2023 – June 2026

