

NEEDS ASSESSMENT

2024 – 2026



Acknowledgments

“The project described was supported through South Carolina First Steps by the Preschool Development Grant Birth through Five Initiative (PDG B-5), Grant Number 90TP0080-02-01 from the Office of Child Care, Administration for Children and Families, U.S. Department of Health and Human Services and Kershaw County First Steps Board and Staff”

Message from the Executive Director



Kimberley Jordan
Executive Director
Kershaw County First Steps

Helping children develop a greater sense of self, a respect for others and a lifelong love of learning are the guiding principles of our work with preschoolers. Kershaw County First Steps has responded to the changing needs of Kershaw County's most vulnerable children by working towards developing and implementing effective strategies and programs that prepare them to achieve academic excellence, emotional health well-being, and the ability to become productive members of society.

I have worked to ensure that young children, birth through five years have support to learn social and cognitive skills to achieve and maintain a high level of success. I will use the data from this needs assessment to map the road to success.

Kimberley Jordan

Needs Assessment Process

CONVENE

Held three community convenings with 68 participants and developed a vision for young children and their families

October 2022 – January 2023



PRIORITIZE

Organized the insight gathered from the convenings and data to prioritize the concerns, needs, and gaps the partnership wants to address and formalized Needs Assessment

January 2023 – March 2023

UNDERSTAND

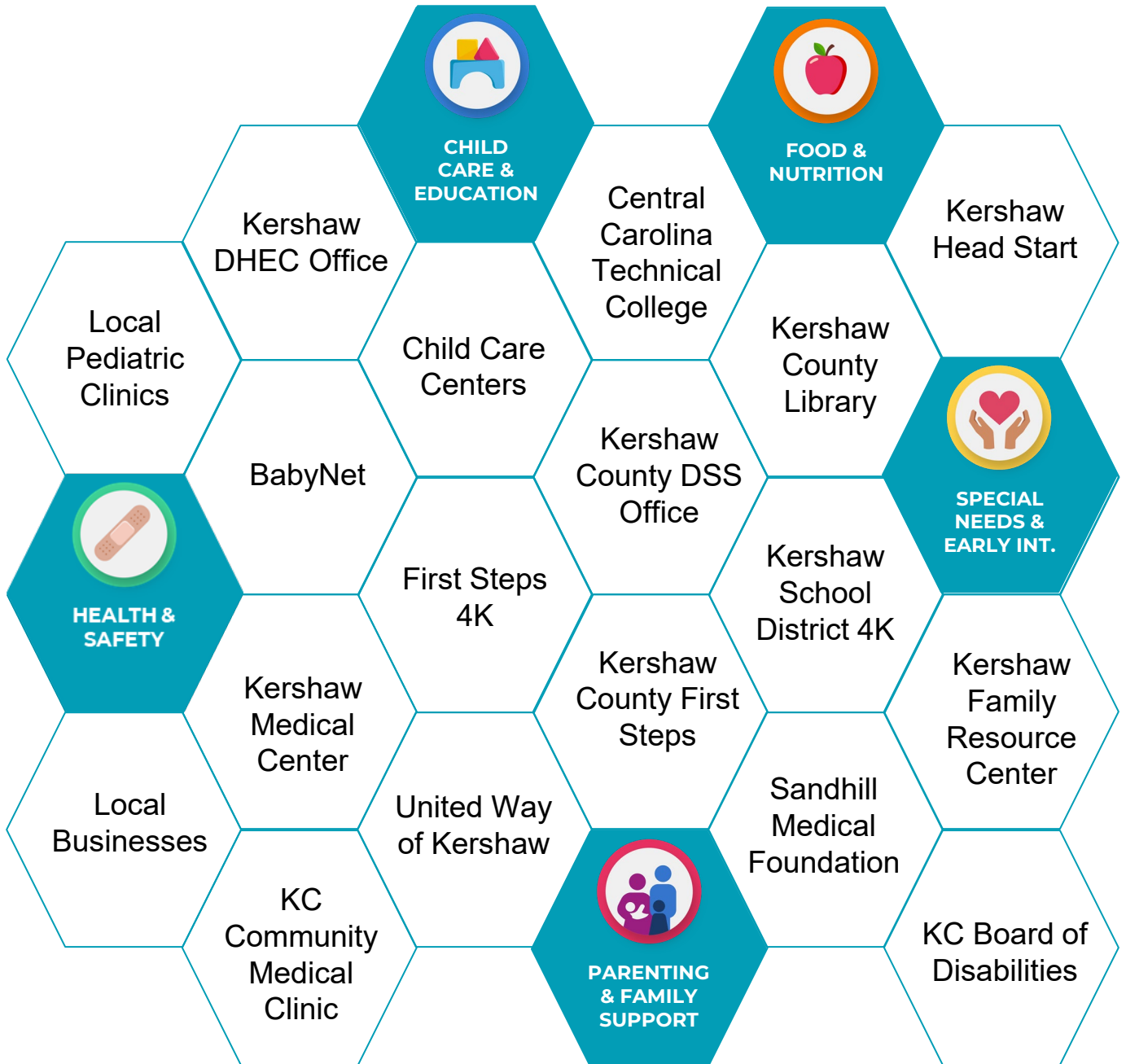
Reviewed local data and map assets to understand the state of young children, their families, and the early childhood system

October 2022 – March 2023

"Experts tell us that 90% of all brain development occurs by the age of five. If we don't begin thinking about education in the early years, our children are at risk of falling behind by the time they start Kindergarten".



Asset Map



Priorities: Summary

1. Adequate prenatal care
2. Child Care deserts
3. Community Awareness

Priority One: Adequate Prenatal Care

31.4 % Babies born to mothers with less than adequate prenatal care

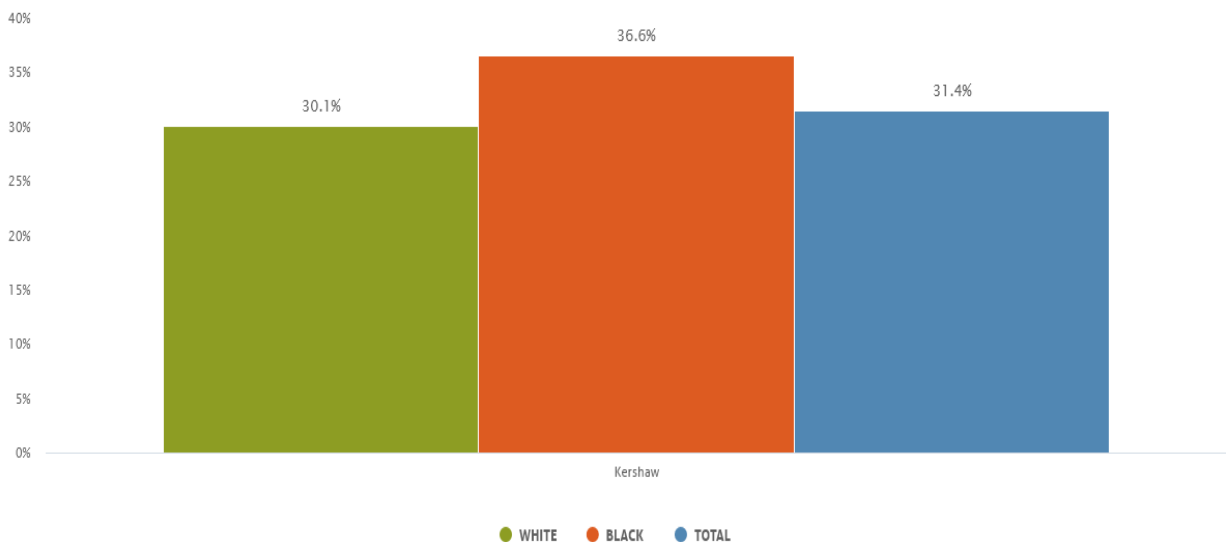
Definitions: Percent births where birth certificate indicates mother with less than adequate prenatal care as measured by the Kessner Index.

The Kessner Index measures levels of prenatal care as determined by the trimester that prenatal care begins, the number of prenatal care visits, and the period of gestation.

Data Source: [South Carolina Department of Health and Environmental Control - Division of Biostatistics and Health GIS: South Carolina Community Assessment Network \(SCAN\) Birth Tables.](#)

Footnotes: Last updated Feb 2023.

BABIES BORN TO MOTHERS WITH LESS THAN ADEQUATE PRENATAL CARE BY RACE (PERCENT) - 2020



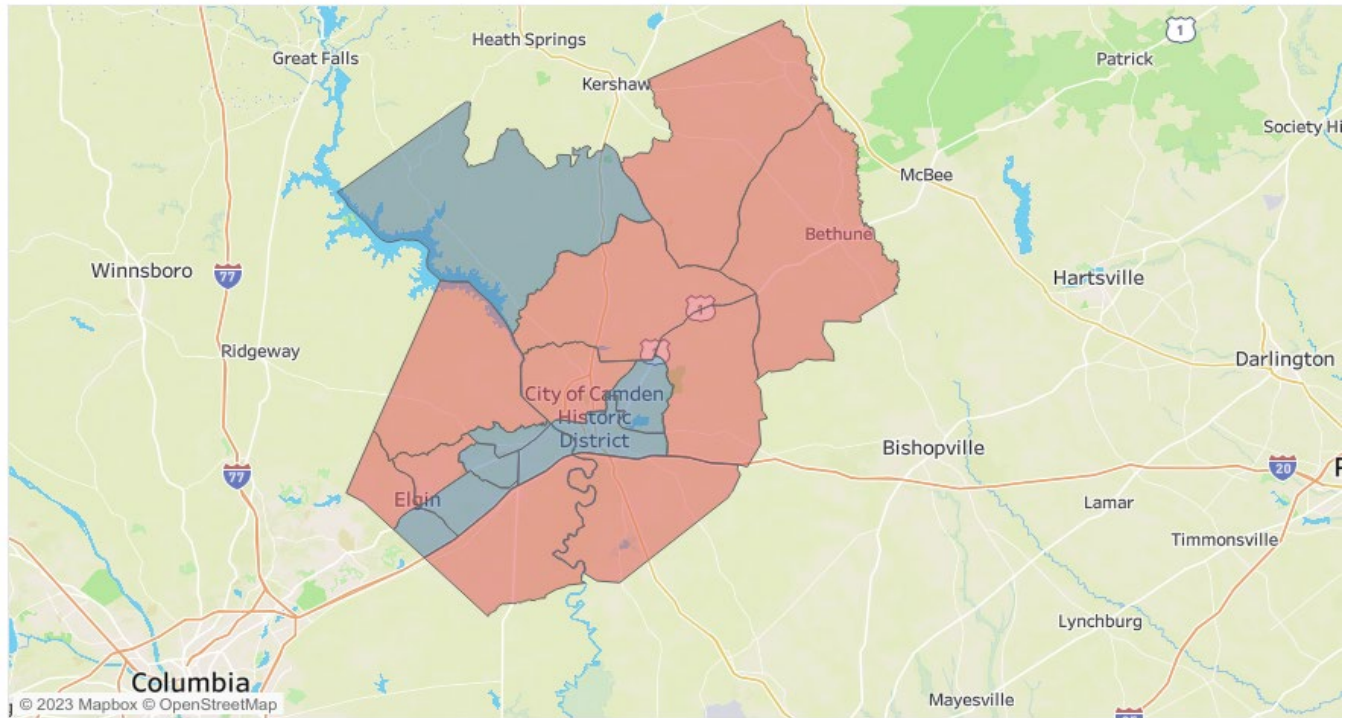
Children's Trust of South Carolina from datacenter.kidscount.org

Priority Two: Child Care deserts

76% of census tracts are considered child care deserts in Kershaw County.

Provider location and center capacity obtained from scchildcare.org on October 16, 2022. Definition of a child care desert obtained from the Center for American Progress, “A child care desert is any census tract with more than 50 children under age 5 that contains either no child care providers or so few options that there are more than three times as many children as licensed child care slots” (<https://www.childcaredeserts.org/>). Population under age 5 by census tract obtained from the American Community Survey 2016-2020 Five Year Estimates (Table B01001). US Census Bureau. Calculations done by Chelsea Richard of South Carolina First Steps (October 16, 2022).

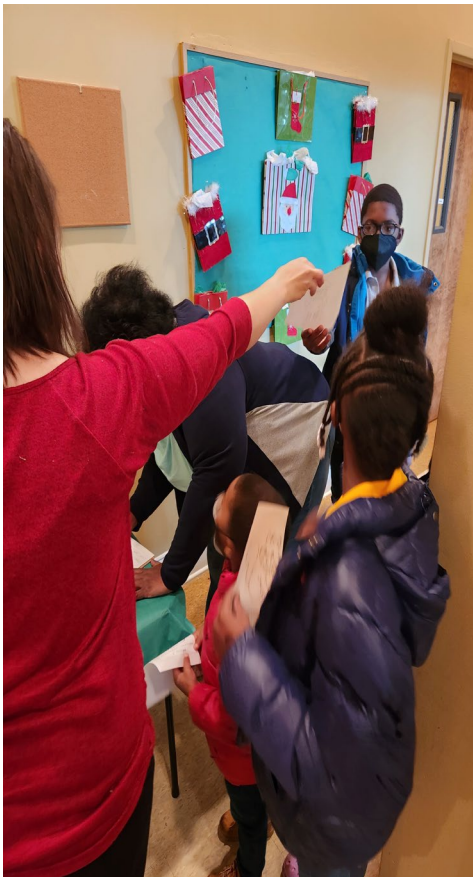
Child care d... ■ No ■ Yes



Priority Three: Community Awareness

68% of surveys indicated that they are unaware of the early care and education services in Kershaw county.

192 surveys were distributed in the Kershaw County community at 3 convener events, 2 partner events, and 4 community meetings. 126 surveys were collected by Kershaw County First Steps, Camden UMC, Camden Omega Chi Phi, and Trinity Apartments.



Quotes:

“...a lot of our community that needs help don’t know where to go for help with their children”

“Each agency should have an early childhood checklist of what they do”.

“Signs are needed around the community”



Next Steps

PLAN

Write the partnership's three-year Strategic Plan using the Needs Assessment

March 2023 – May 2023



APPLY

Utilize the Strategic Plan to inform the partnership's Annual Formula Funding Grant Application

May 2023, May 2024, May 2025



IMPLEMENT

Execute the programs and services outlined in the Strategic Plan

July 2023 – June 2026



MONITOR

Track the partnership's progress on implementing programs to fidelity and on achieving the Strategic Plan

July 2023 – June 2026

